

专注品质 · 服务至上
Focus on quality, Service first



青岛赛诺威拓钢材有限公司

地址：山东省青岛市城阳区山河路702号
电话：0532-83289239
传真：0532-83289239
24小时热线：186 6983 0270
邮箱：sales@witopsteel.com

Qingdao Witop Steel Co.,Ltd

ADD: NO.702 SHANHE ROAD, CHENGYANG DISTRICT
QINGDAO, SHANDONG PROVINCE, CHINA
TEL: 0086-532-83289239
FAX: 0086-532-83289239
24h HOTLINE: 0086-186 6983 0270
Email: sales@witopsteel.com

赛诺威拓钢材

Qingdao Witop Steel Co.,Ltd

专注品质 · 服务至上

Focus on quality, Service first



目录 Contents

>>公司简介

Company Introduction.....01

>>镀锌卷板

Galvanized Steel Coil/Sheet.....02

>>镀铝锌卷板

Galvalume Steel Coil/Sheet.....04

>>彩涂卷板

Pre-painted Steel Coil/Sheet.....06

>>瓦楞板

Corrugated Roofing Sheet.....08

>>生产设备

Production Machine.....10

>>检测设备

Inspection Equipment.....12

公司简介 Company Introduction

青岛赛诺威拓钢材有限公司，作为中国北方主要的钢材生产商有着超过20年的业内经验，主要生产和销售冷轧，镀锌，镀铝锌和彩涂类产品。公司在平等互利双赢合作的基础上与国内外厂商广泛交流、友好合作。

公司从德国、日本、比利时、美国、英国等国家引进了当时世界上最先进的炼钢、炼铁、板材加工技术，配备了完善的自动化系统。现阶段达到年产量80万吨，包含冷轧卷板，镀锌，镀铝锌，彩涂卷板等，同时还提供压瓦，纵剪，冲孔，冷弯等深加工服务。

自投产以来，坚持追求先进永不停步，通过持续不断的技术改造，保持了技术上的领先优势，公司的产品远销欧美、非洲、中东、东南亚及南美各国及地区，并以优质的产品和服务赢得了广大顾客的信赖与赞誉。

青岛赛诺索腾钢材有限公司将会一直保持诚信守德，求真务实的宗旨，捍卫和推广我们品牌的知名度，我们同时也会一直秉承给国内外客户提供高质量产品和一流服务的原则，衷心希望您建立起长期的双赢合作。

Qingdao Sino Witop Steel Co., Ltd, with over 20 years experience, is a leading steel manufacture in northern part of China. we are specializing in Cold Rolled, Galvanized, Galvalume and Prepainted Steel materials production and sales, and has been conducting extensive exchanges and friendly co-operations with domestic and overseas companies on the basis of equality, mutual benefit and win-win cooperation.

We imported the advanced technology from Germany, Japan, Belgium and America, UK etc. for iron-smelting, steel-smelting, and processing steel sheet, also equipping with the complete automatic system. Now our annual production capability could reach 800,000 tons including Galvanized, Galvalume, Prepainted Steel Coils etc but not limited the raw materials only. We also could make corrugation, slitting, bending, punching and other deep processing services.

Since the producing began, our company insisted in arriving at the advancement in the technology field by our continuing effort. At present, the company has gained lots of trust and praise from all over the world with qualified products and good service, exporting to Latin-America, Europe, South-east, Asia, Middle East area and Africa.

Qingdao Sino Witop Steel Co., Ltd will remain honest, realistic and pragmatic as always to safeguard, strengthen and carry forward our Brand. We also will provide continuous high-quality commodities and top-class services to domestic and overseas clients. We sincerely wish to develop long-term win-win cooperation with you.



镀锌卷板

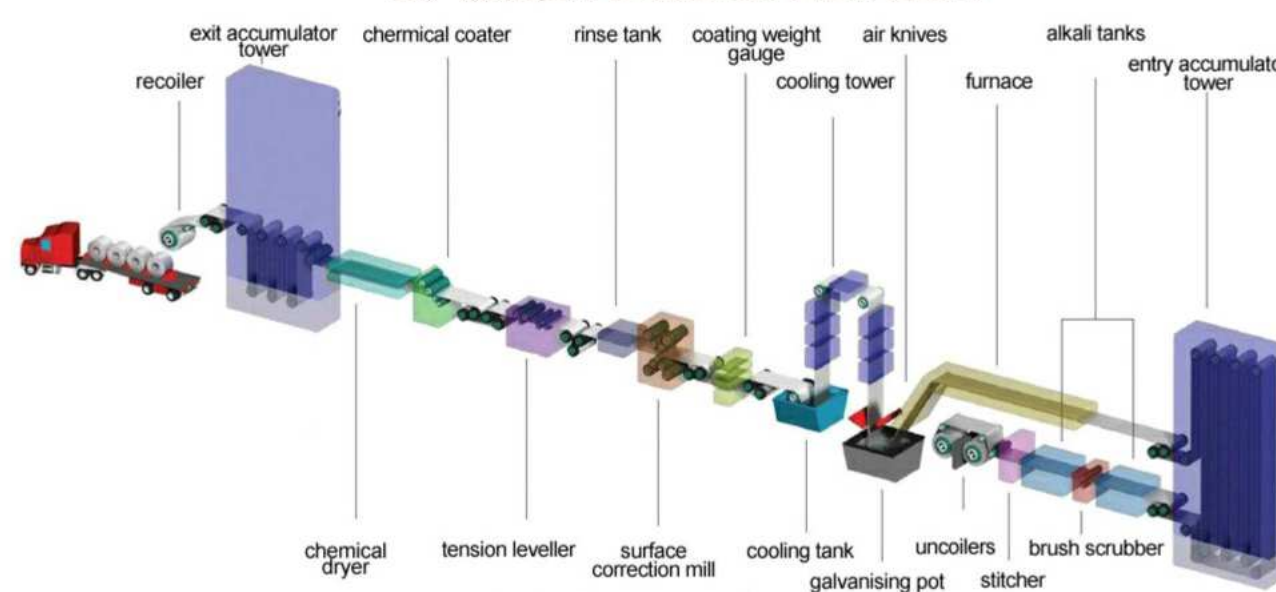
Galvanized Steel Coil/Sheet

镀锌钢卷是通过金属涂层工艺生产的，该工艺包括使冷轧卷通过含有熔融锌的容器。该过程确保了锌对钢板表面的附着力。锌层具有出色的耐腐蚀性，并能延长使用寿命，可成形性，可焊接性和可涂漆性，热浸镀锌钢产品用途广泛。它用于土木工程和建筑以及汽车和电气部件。

Galvanized Steel Coils are produced through a process of metal coating which involves passing cold rolled coils through a kettle containing molten zinc. This process ensures adhesion of Zinc to the surface of the steel sheet. The Zinc Layer provides excellent corrosion resistance and prolong service life, formability, weldability, and paintability, Hot-dip galvanized steel products have versatile usage. It is used in civil engineering and construction as well as in automobile and electrical parts.



生产流程图 Production Flow Chart



技术参数 Technical Specifications

生产标准 Standards	GB/JIS/ASTM
生产范围 Size range	Thickness 0.12mm -4.0mm, width 20-1250mm
锌层 Zinc coating	30-600g/m ²
卷内径 Coil ID	508mm/610mm
表面处理 Surface	Chromated / Unoiled/ Dry
锌花 Spangle	Regular/Minimized/ Big Spangle
包装 Package	seaworthy package
卷重 Coil weight	3-8mt





生产流程图 Production Flow Chart



镀铝锌卷板

Galvalume Steel Coil/Sheet

镀铝锌 是一种55% 铝锌涂层钢板产品，非常适合于大多数类型的屋面和壁板应用，以及未暴露的汽车零部件、电器和各种应用，如家具、户外橱柜、电脑箱、排水沟、管道等。自1972年以来，全球已生产超过1.4亿吨特许产品。镀铝锌由于其多功能性、易用性、美观性和长期性能，不断获得专家、建筑师、业主和许多其他人的认可

GALVALUME is a 55% Al-Zn (43.5%Zn, 1.5% Si, 55% AL) coated steel product that is ideally suited for most types of roofing and siding applications as well as unexposed automotive parts, appliances and miscellaneous applications like furniture, outdoor cabinetry, computer cases, gutters, pipe, etc. Since 1972, over 140 million tons* of licensed product has been produced globally. GALVALUME continues to gain approval by specifiers, architects, building owners and many others due to its versatility, ease of use, aesthetics and long-term performance.

技术参数 Technical Specifications

生产标准 Standards	JIS, ASTM, AISI, GB
生产范围 Size range	Thickness 0.13-1.5mm,width 600-1250mm 厚度：0.13-1.5mm 宽度 600-1250mm
硬度 Temper	Full Hard, Half Hard, Soft 全硬 中硬 软态
涂层 Coating	AZ40 ---AZ150
卷重 Coil Weight	3--8mt
卷内径 Coil ID	508MM /610MM
包装 Package	seaworthy package
表面处理 Surface	Chromated / oiled /un-oiled /dry / AFP 钝化/不钝化 涂油/不涂油 耐指纹





彩涂卷板

Pre-painted Steel Coil/Sheet

通过在冷轧，镀锌或镀锌铝卷的表面涂覆一层涂料来生产预涂漆卷。美观和耐用性是彩涂钢卷的主要特征。彩涂钢卷是通过在基础表面上进行适当的表面处理后再涂上彩色涂料或将有膜粘在基片上而制成的。彩涂钢卷重量轻，美观，良好的防腐性能，可直接加工，也为建筑，造船，汽车制造，家具工业，电气，家电提供新型原材料；如钢代替木材，如高效施工，节约能源，防止污染。随着行业的发展，木纹彩涂卷，迷彩彩涂卷，透明彩涂卷也已经涉足并被市场广泛使用。

Pre-painted coils are produced by coating a layer of paint on the surface of cold rolled, galvanized or galvalume coils. Aesthetic appeal and durability are the key features of color coated steel coils. The color coated steel coils are manufactured by painting colorful coating materials or by conglutinating organic film on the basic sheet after the proper surface treatment. Color coated steel coils has a light weight, beautiful and good anti-corrosion performance, it can be directly processed, and also provides a new type of raw materials for construction, shipbuilding, automobile manufacturing, furniture industry, electrical, appliance; such as the steel instead of wood, such as efficient construction, save energy and prevent pollution. With the development of the industry, the wooded color steel coils, camouflage color steel coil, transparent color steel coil have also been stepping into and widely used by the market.



生产流程图 Production Flow Chart



技术参数 Technical Specifications

生产标准 Standards	GB/JIS/ASTM
生产范围 Size range	Thickness 0.14-1.5mm, width 600-1250mm
硬度 Temper	Full hard, half hard, soft
基板涂层 Material Coating	AZ40 ---AZ160, Z40--Z140g/m2
卷重 Coil Weight	3--8mt
漆膜 Paint Coating	Top side: 17--25 micron, back side 5-10micron
颜色 Color	RAL Chart, As per customer's color sample
油漆分类 Paint Types	Top paint: PVDF, HDP, SMP, PE, PU Prime paint: Polyurethane, Epoxy, PE Back paint: Epoxy, Modified polyester

彩涂卷测试标准 Test Item Standard For Pre-painted Steel Coil

转弯实验 T Bend	NCCA11-19	<3T
杯突实验 Cupule Test	GB/T9753	>8mm
冲击试验 Impact(Shock Force J)	GB/T1732	>9J
附着力实验 Adhesion (MEK)	GB/T9286	Not less than 0
铅笔硬度实验 Pencil Hardness	GB/T6739	> 2H
光泽度实验 Gloss	GB/T1743	<5%
色差测试 Chromatism(E)	ECCA T3	E<5
溶剂试验 MEK Scrub Resistance	MCCA11-18	>100
盐雾试验 Salt Spray Resistance	GB/T10125	500 hr



瓦楞板

Corrugated Roofing Sheet

瓦楞钢瓦板由彩涂板，镀铝锌钢卷/板和镀锌钢卷/板制成，并通过辊压成型机加工。

根据形状的不同，它主要分为T形瓦，波纹瓦，釉面瓦等。另外，根据金属材料的不同，可以分为彩色涂层屋面，热浸镀锌瓦楞屋面和镀锌板屋面。

波纹钢屋面板广泛用于：

建筑：预制房屋，钢结构房屋，活动房屋，模块化房屋，别墅，平房设计，便携式房屋，现成房屋，售货亭，钢结构建筑.....

集装箱制造

家用电器和家具

车辆和船舶制造

其他，如机械结构零件，电动机外壳

Corrugated steel roofing sheet is made of color coated sheet and Galvalume Steel Coil/Sheet & galvanized steel coil/sheet and processed by Roll Forming Machine.

Therefore according to the different shapes, it is mainly divided into T-shaped tiles, corrugated tiles, glazed tiles and so on. Also According to different metal materials, it can be divided into color coat roofing sheets, hot dip galvanized corrugated roofing sheets and galvalume sheet roofing.

Corrugated Steel Roofing Sheet are widely used in:

Construction: prefabricated house, steel house, mobile house, modular house, villa, bungalow design, portable house, ready made house, kiosk booths, steel building...

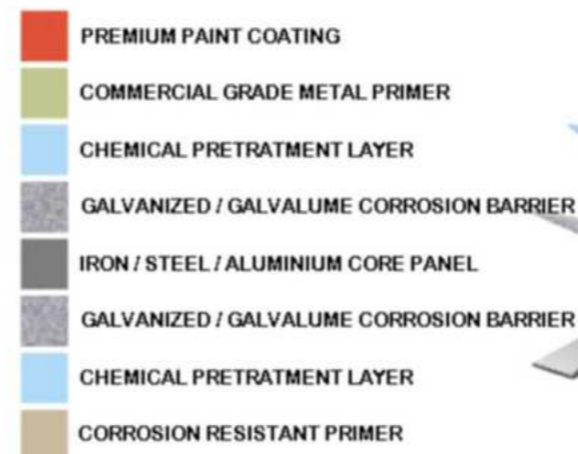
Container manufacturing

Household Appliances and furniture

Vehicle and vessel manufacturing

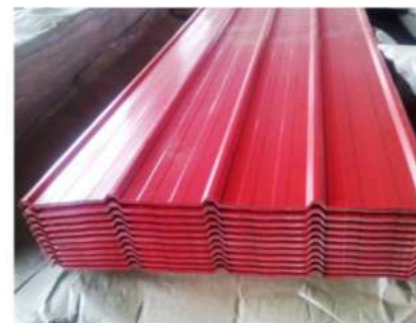
Others, like machinery structure parts, manufacturing shells of motors

LAYER SYSTEM



技术参数 Technical Specifications

原材料 Raw material	GI, GL or PPGI, PPGL
生产标准 Standards	GB JIS ASTM AISI
厚度 Thickness	0.14mm-0.7mm
宽度 Width	750-1250mm(BC)/665-1050mm(AC)
长度 Length	1000-12000MM
单托重量 Pallet weight	2-4mt



生产设备 Production Equipment



1.镀锌生产线Galvanized production line



2.镀铝锌生产线Galvalume production line



3.彩涂生产线Prepainted production line



开卷机 DECOILER



缝焊机 seam welder



退火炉 ANNEALING FURNACE



下料操作台和下料活套
Cutting Station and cutting looper



冷却塔 COOLING TOWER



钝化和烘干机 dryer



精涂机 Coater



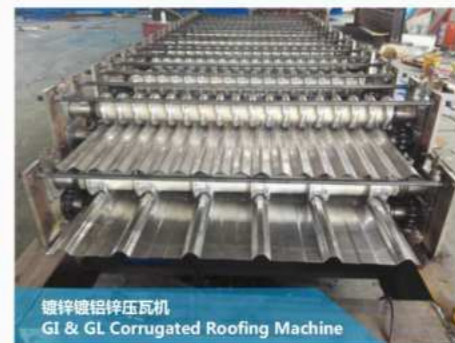
收卷 COILER



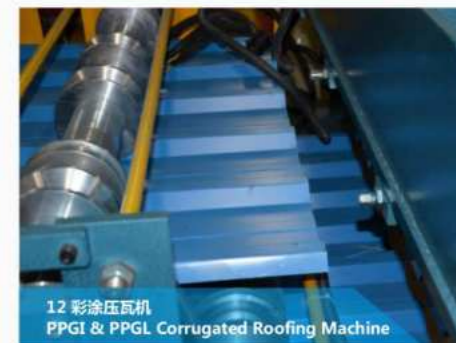
分条机 Slitting machine



开平机 Cutting Sheet Machine



镀锌镀铝锌压瓦机
GI & GL Corrugated Roofing Machine



12 彩涂压瓦机
PPGI & PPGL Corrugated Roofing Machine

检测设备 Inspection Equipment



附着力测试仪
Adhesion (MEK)



光泽度测试仪
Gloss Meter



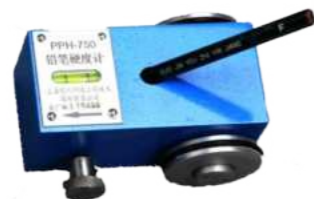
色差测试仪 Chromatism



褪色测试仪
Weather Resistance (Q.U.V)



折弯机
Bending Machine



铅笔硬度测试仪
Pencil Hardness Tester



冲击试验仪
Flexibility
Impact
Tester



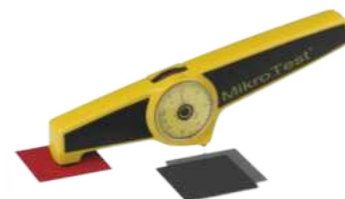
盐雾试验测试仪
Salt Spray Resistance



螺旋测微仪
Micrometer



杯突测试仪
Coating Cup Drawing Tester



漆膜仪
Coating Thickness Tester



力学性能测试仪 Mechanical Property Machine

